

COMPANY PROFILE

SOUTHPOLE ENGINEERING

Precision Engineering
With A Real Value Driven
Difference.

Here at Southpole Engineering we are focused on consistent growth and development within our field of expertise in general engineering. We have placed emphasis on being able to undertake all size engineering work, whether it be large or small. Our facility is comprised of lathe turning machines and milling machines, where we are able to turn and mill in a wide range of materials to ISO tolerances and specifications.

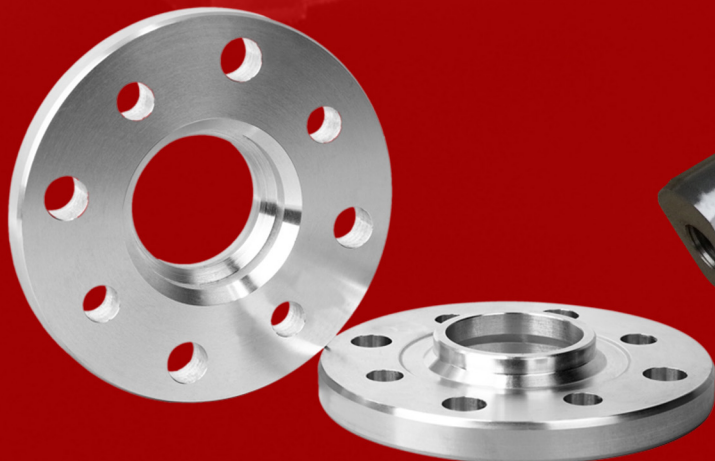
Based in Blessington - Wicklow: Southpole is owned and managed by Damian Mroczek; who is directly involved with all technical aspects of our company, as well as being directly involved with manufacturing, machining, fabrication and quality control procedures at Southpole Engineering.

With superior quality playing the number one factor in any engineered product we make, we also understand that pricing should compliment a product equally. Due to this basic understanding, we are able to offer our customers the best in service, quality engineered products; all coupled with really competitive pricing. Do not hesitate to contact us with your engineering requirements as we work alongside you in creating a great future and an equally beneficial business relationship.



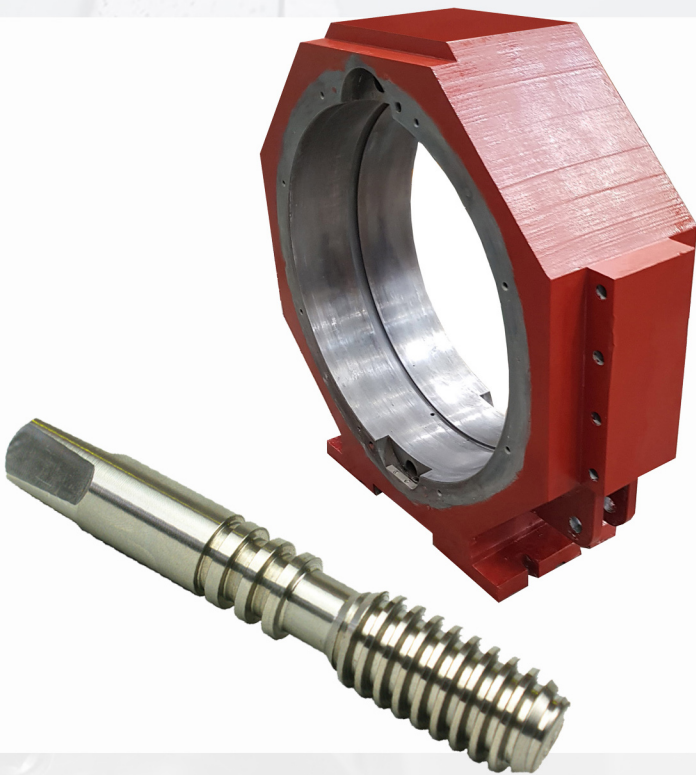
Providing Solutions To The Following Industries:

- Industrial Diamond <
- Power Plants <
- Mining <
- Mechanical Seals <
- Bearing & Coupling <
- Food & Beverage <
- Power Transmission <
- Automotive <
- General Engineering <
- Industrial Gear & Gearbox <
- Plastic Manufacturing <
- Printing <
- Petroleum & Chemical <



We Design, Manufacture & Supply:

- > Carbide / Industrial Diamond Machine Parts
- > Couplings
- > Stainless Steel Mechanical Seal Parts
- > Bearing Housings & Flanges
- > Conveyor Rollers & Parts
- > Printing Rollers & Parts
- > Automotive Machining Aids (Jigs)
- > Gears, Pinions, Gear shafts & Spacers
- > Machining Small & Medium Gearbox Castings
- > Small to medium Press-Tool & Die Holders
- > General engineering (jobbing) activities
- > Stainless Steel Fabrications
- > Mild Steel Fabrications



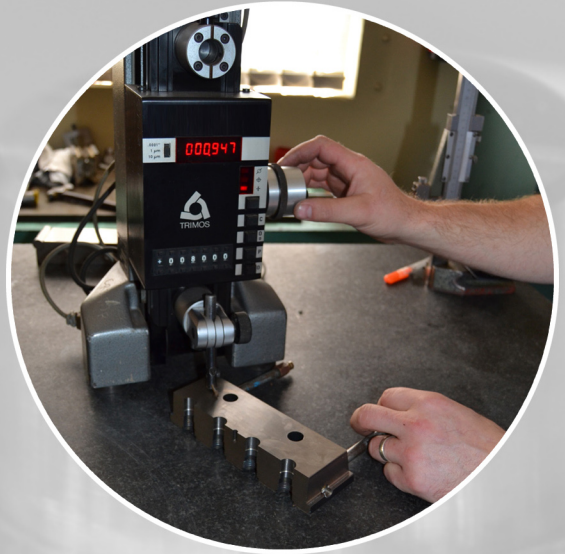
Specialised Engineering Services

- > Design
- > Drafting
- > Detailing
- > Engineering & Planning
- > Site Surveying
- > In-house Design & Drawing
- > Stainless Steel Fabrication
- > Mild Steel Fabrication
- > Industrial Gearbox Parts
- > Industrial Pulleys & Shafts
- > General Engineering Projects
- > Press Tool & Die Holders



Our Quality Policy:

The "Quality Policy" of South Pole Engineering is to minimize problems and unscheduled events by adhering to a formal quality programme. This ensures that clients obtain ordered products which represent value for money and are fit for their purpose. Safety and reliability are considered when designing, manufacturing and installing products. Problem prevention is emphasized, rather than dependence on detection after occurrence.



Whilst the system is developed to meet these objectives, it is structured to meet the generally used "ISO 9000 - Latest Edition" standards. This requires that all personnel work to the company's defined standards and procedures, detailed in the "Quality Manual" and supporting "Quality Procedures Manual". This policy will be communicated to, and understood by, every employee of the company.



SOUTHPOLE
ENGINEERING

☎ +353 87 664 2283

✉ sales@southpole.ie

📍 Unit 5A Burgage Buisness Park
Burgage More,
Blessington, Co.
Wicklow
W91 TN99

www.southpole.ie

